

>> VISIONARY ENDOSCOPY

HD



HD endoscopy

NEW The EPX-2500 video processor.
The new high-definition standard in endoscopy.

With the new EPX-2500 processor, Fujinon is presenting a new standard in high-definition quality – and with it the ideal solution for every office and hospital. The processor is a convincing choice, with its ease of use and high-resolution, optimally illuminated images. The digital video output (DVI) in the EPX-2500 provides images in high definition and with no loss of quality. Pin-sharp, clear, and in natural colours. In addition, the processor is also equipped with a series of functions

that make the examination safe and diagnostically useful. A further highlight is its compatibility: two ports make it possible to connect both the 200 and 530 Fujinon endoscopes. This means that existing routine models can continue to be used, or devices from the latest generation of endoscopes can be employed. All in all, the new EPX-2500 is the processor of choice for economical high-definition endoscopy. **Fujinon. To see more is to know more.**

Perfectly equipped for high definition in everyday work.

Xenon light source.

The integrated light source in the new EPX-2500 provides the physician with bright, uniformly illuminated images. A total of nine different light settings can be selected.

Easy to use.

All of the functions available with the new EPX-2500 are clearly arranged on the control unit and can be used quickly and easily. In addition, the processor has a multi-switch that provides direct access to all of the options such as EMV, IRIS, EM, or Reset at a single press of the finger.

Picture-in-picture function.

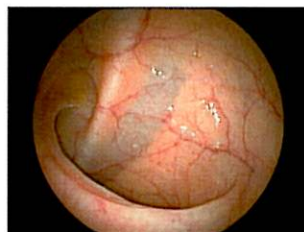
Two images at a glance – this is what makes the new EPX-2500 a safe choice for examinations. In freeze mode, the real-time image is still displayed live, so that blind observations can be minimised.

Better imaging of blood vessels.

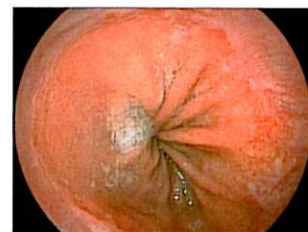
The blood vessel function provides better imaging of the vessels. Sharp contrast gives them a clear and detailed appearance.

2x zoom for instant enlargement.

The new EPX-2500 provides electronic enlargement up to 2x. The high-resolution images lose hardly any quality in the process and even the tiniest details can be recognised safely and quickly.



EC-530FI



EG-530FP

The EPX-2500 processor with integrated light source

Technical data	
Power	230 V / 50 Hz / 1,4 A
Colour Adjustment	Black, red, green, blue, R-hue, chroma; 9 settings
Detail	Hi, Lo; 9 settings
Contrast (gamma)	9 settings
BLV	High, medium, low, off
Picture-in-picture function	On, off; size: 1/4, 1/3
Auto Gain Control	Off, +3 db, +6 db
Iris	AVE (average); PEAK (peak)
Image zoom	Electronic zoom: x1-x2 (in steps of 0.05)
Lamp rated value	Main lamp: xenon lamp, 11,7 V / 150 W; emergency lamp: halogen lamp, 12 V / 75 W
Brightness control	9 settings
Lamp cooling method	Forced air cooling
Air supply pump	High, low, off
Digital output	DVI (digital visual interface): 1.024 x 768 p
Analogue output	RGB (2): SDTV (NTSC/PAL); Y/C (2): SDTV (NTSC/PAL); composite: SDTV (NTSC/PAL)
Size (W x H x T)	375 x 190 x 495 mm
Weight	17 kg